



# GSPC Security

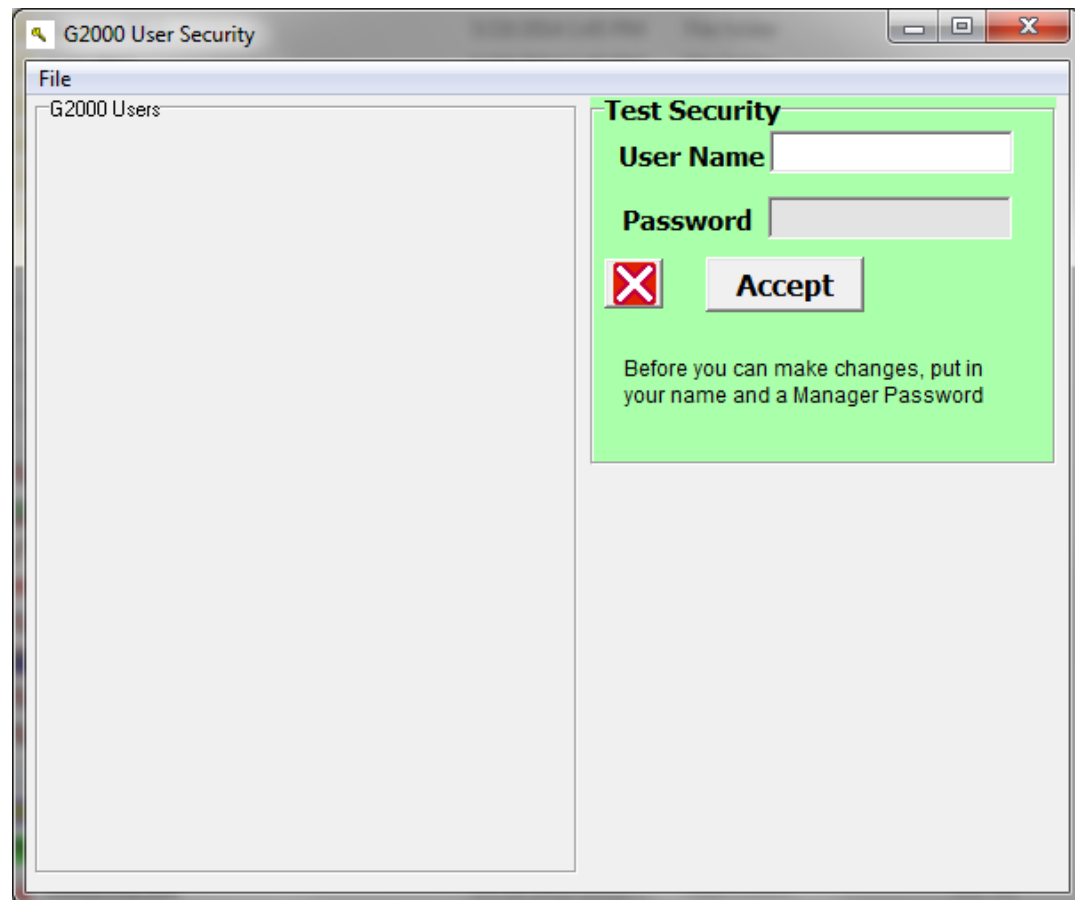
Graphic Statistical Process Control  
by MeltLab Systems  
844-MeltLab  
[www.meltlab.com](http://www.meltlab.com)

Fast • Accurate • Comprehensive

# GSPC Security

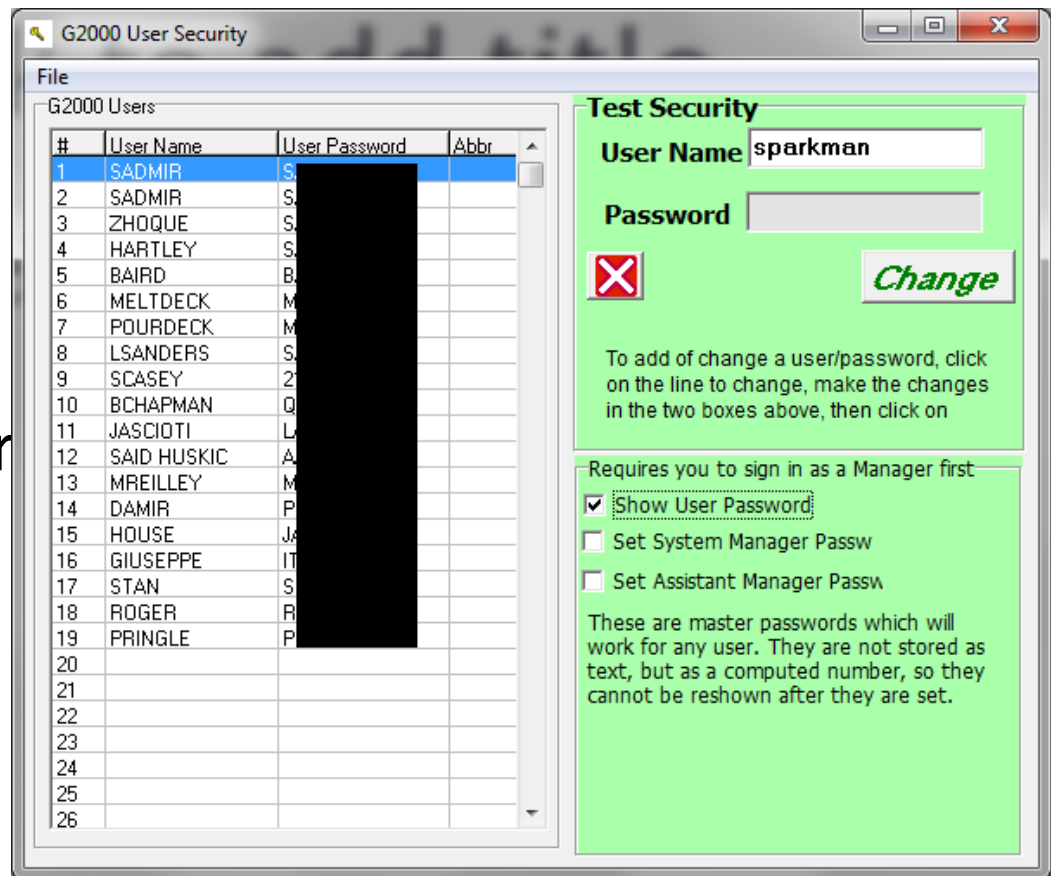
- Security is generally based on the User, but can be tied to the computer.
- Programs have different options that may not be available to all users.
- The system manager and his assistant control the user passwords and permissions.

# User Security program - info blocked



# User Security program - unlocked

- Add up to 80 users.
- Hide or show passwords.
- Add a System Manager password.
- Delete Users.



# Signing in to a GSPC program

- Successful logging in shows authorization.
- Can choose auto login for current computer.
- Master password unlocks users (security levels).
- Done button returns to program.
- Log off button removes security permissions.

Sign in please

Your Name SPARKMAN  Auto Login

Password \*\*\*\*\*

Unlocked Password Accepted

Log off Done Exit Program

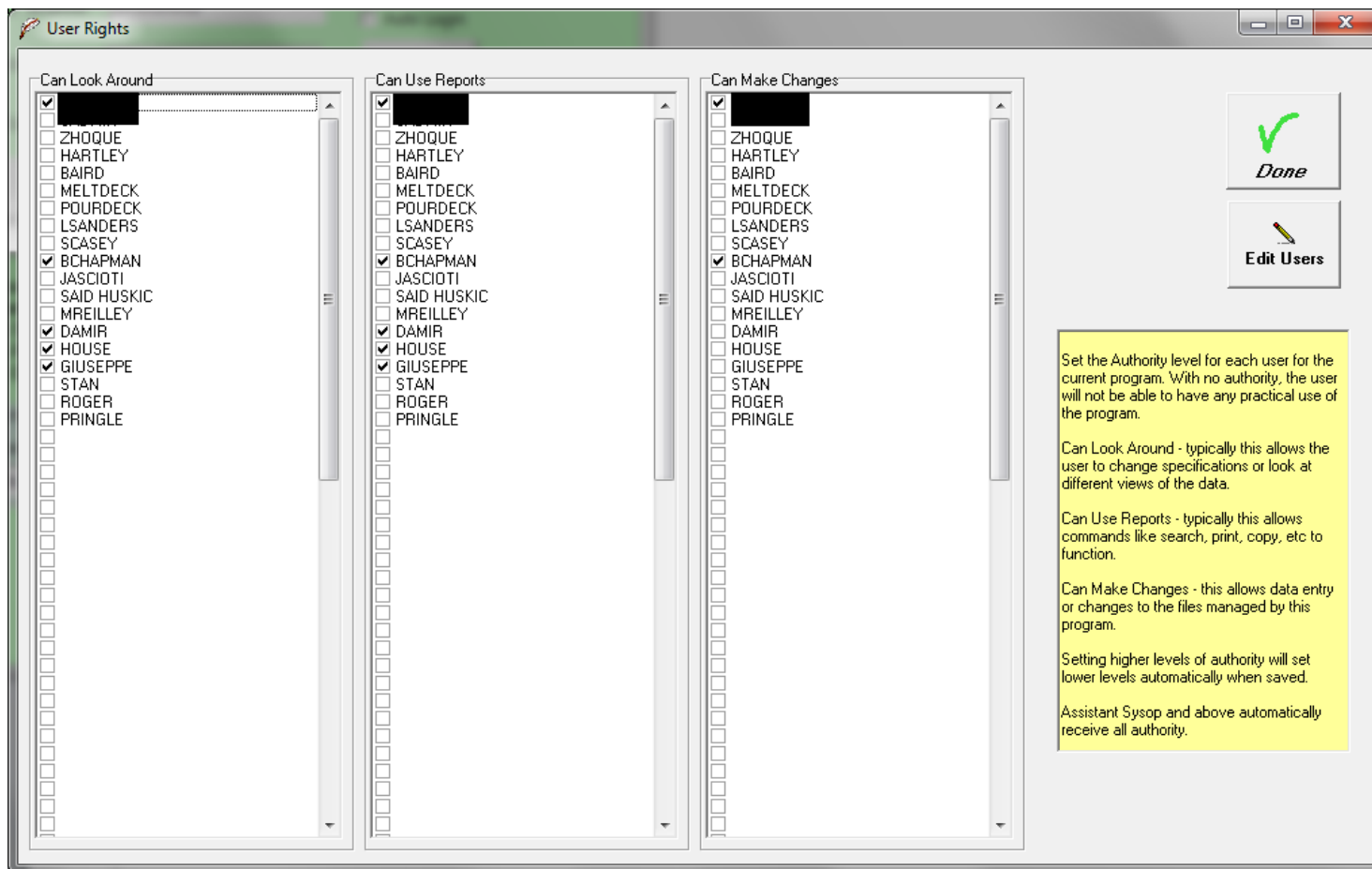
Look Around  Change others  Assistant SysOp  
 Enter Data  Change System  SysOp  
 Change Self  G2 look around  Distributor  
 Change Report  G2 reports  Programmer  
 Change Data  G2 make chages  Master

License Information -- Data Entry

Date Licensed Today Full License Limited License

2/15/2006  Full License

# Give privileges to Users by program



# Global Setup is used to set license

- This program is used to license different parts of the GSPC system. It is read only to everyone else.

